



LORI WOLD, TEEM 2007

What Do TEEM Candidates Have To Say?



What Is TEEM?

Theological Education for Emerging Ministries (TEEM) is a program of the Evangelical Lutheran Church in America to prepare candidates for ordained ministry in ethnic-specific, multicultural, rural, inner-city or deaf community contexts. It is a certificate (non-degree, non-MDiv) program of preparation designed to meet the missional needs of the church in emerging ministry contexts.

Who Are TEEM Candidates?

Candidates for the TEEM program are nominated by their synods and approved by the ELCA. Normally age 40 or older, TEEM candidates are persons “who by reason of age and prior experience . . . are qualified to participate in an alternative program of preparation for ordination” (ELCA website). TEEM candidates must complete a Candidacy Application Process, receive a positive Entrance Decision from their synod’s Candidacy Committee, and be recommended by their synodical bishop. Each candidate works with a Theological Review Panel (TRP) while completing all of the TEEM requirements.

COMMUNITY:

When we are on campus, the Wartburg community of faculty, staff and students have gone out of their way to make us feel a part of the on-campus community. They have had social events, provided devotions and chapel time for us and have made every effort to be available to meet our needs...*Del from Salina, Kansas*

Everyone (at Wartburg), from the instructors, staff, and fellow students, seems to be genuinely concerned about others in the community...
Jay from Sioux City, Iowa

FLEXIBILITY:

Wartburg staff and professors have all been very supportive and accommodating to our/my needs...*Vicki from Amboy, Illinois*
...flexibility in starting time...less travel time & expense, incredibly supportive staff...*Velma from Volin, South Dakota*

I am awaiting placement in a church and the Wartburg flexibility has allowed me to continue in my present career while discerning my call and completing my coursework...*Lori from Boyd, Minnesota*

QUALITY OF ONLINE AND INTENSIVE INSTRUCTION:

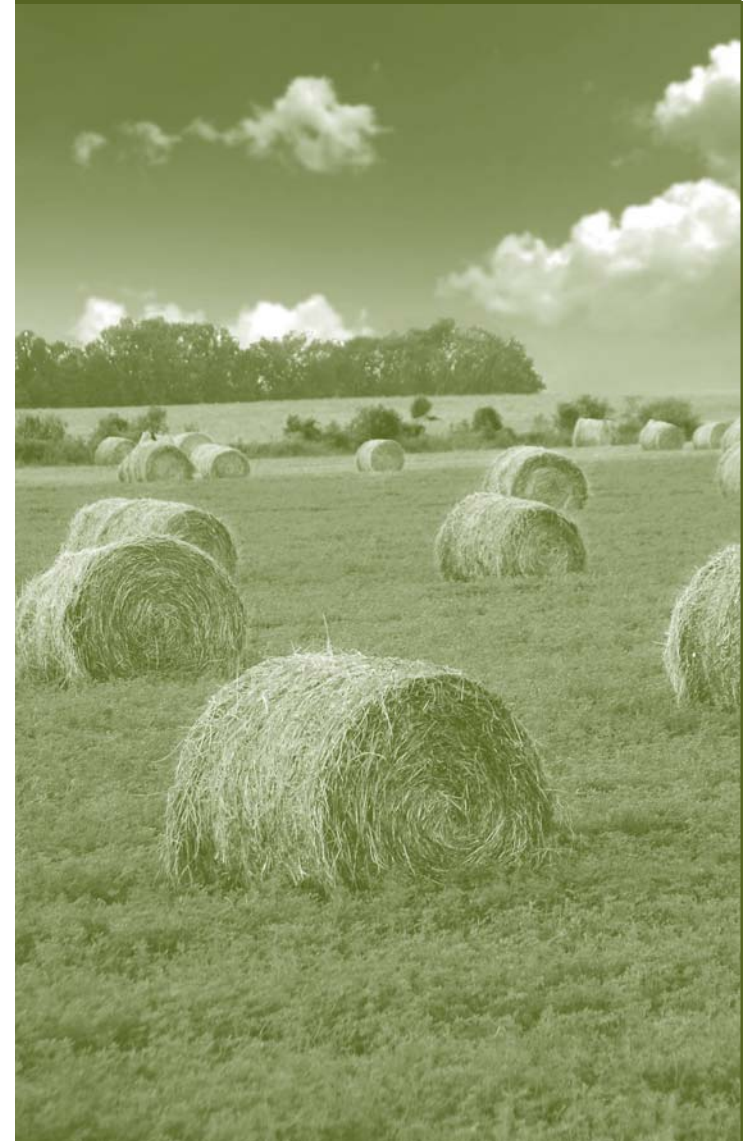
Having met people at the intensive, and then “meeting” them again in the online course(s), you feel like you know them, and hopefully when we meet again at another intensive, we can build on the relationship that was started...*Jean from Gladstone, Michigan*

Instructors challenge me through the forums and give more insight on the subject material. I think I enjoy intensives more because of the direct contact with other students and instructors, but the online courses fit into my daily schedule at home and work...
Ray from Ross, North Dakota

I am so pleased that I am studying at Wartburg; the course content as well as the professionalism and approachability of the professors has been gratifying ...*Judy from West Point, Nebraska*



Theological Education for Emerging Ministries



WHAT DOES WARTBURG OFFER TEEM CANDIDATES?

Wartburg Theological Seminary's TEEM curriculum is designed to meet the seven basic competencies necessary for ordained service in the ELCA, which are:

- biblical knowledge and understanding
- basic understanding of theology/ethics
- knowledge of Christianity in the United States
- ability to understand and communicate the teachings of the Lutheran church
- evangelism/stewardship/worship
- pastoral care skills
- knowledge of ELCA church polity and ecclesiology

THE CURRICULUM INCLUDES SIXTEEN COURSES:

Hebrew Bible 1 & 2
New Testament 1 & 2
Church History
Lutheran Confessions and Mission
Systematic Theology 1 & 2
Lutheran Ethics
Lutheran Leadership, Ecclesiology, and Church Polity
Preaching 1 & 2
Lutheran Worship
Educational Ministry
Pastoral Care
Contextual Ministry (including Stewardship and Evangelism)

In addition to the sixteen courses, Wartburg's TEEM curriculum includes:

- Mentoring in partnership with home synod
- One Unit of Clinical Pastoral Education (CPE)
- Internship

The following are abiding commitments of Wartburg Theological Seminary that inform the entire TEEM curriculum:

- Action-reflection method of learning
- Sensitivity to context (especially rural ministry)
- Missional church
- Justification and justice
- Partnership of women and men, clergy and laity in ministry
- Global connections
- Collegiality
- Ecumenical openness
- Fostering the spirit of life-long learning

HOW DO CANDIDATES COMPLETE WARTBURG'S TEEM CURRICULUM?

Course requirements may be completed through a variety of ways:

Through intensive courses (weekend or week-long) held on the Wartburg campus at announced times throughout the year; for a current schedule of intensive courses visit the Wartburg Theological Seminary website at <http://www.wartburgseminary.edu>

Through TEEM-designated online or residential courses offered through Wartburg's Center for Theology and Land; for a current schedule of online courses visit the Center's website at <http://ruralministry.com>

Through TEEM-designated online or residential courses offered through the Masters degree programs of Wartburg Theological Seminary

Through TEEM-designated courses with regional lay schools of theology in partnership with Wartburg Theological Seminary

Candidates are normally expected to complete half of their required TEEM courses on the Wartburg campus through intensive or residential courses.

Wartburg Theological Seminary works in cooperation with each candidate's synod Candidacy Committee to arrange a mentoring relationship, CPE and internship.

WHAT IS THE TUITION FOR WARTBURG'S TEEM CURRICULUM?

TEEM tuition is normally set when the student officially becomes a TEEM candidate and is guaranteed for the duration of the student's work with Wartburg. The tuition is based upon the current per unit tuition for all other Wartburg graduate courses, as one TEEM course is equivalent to 1MDiv/MA credit hour in content and tuition.

The Wartburg program may afford TEEM students the possibility of advanced standing in an MDiv curriculum, should a student desire to pursue MDiv study after ordination. Students seeking to receive Masters credit for particular courses need to make arrangements in advance with the Academic Dean's office. The tuition to Wartburg is paid according to course load. Additional charges will be assessed for administration of the internship. Clinical Pastoral Education (CPE) may also require tuition payment to the host institution. Further information about costs is available online at www.wartburgseminary.edu.

WHERE CAN I LEARN MORE ABOUT WARTBURG'S TEEM CURRICULUM?

Please contact the WTS TEEM staff at TEEM@wartburgseminary.edu or call 563-589-0273.

Wartburg Theological Seminary
333 Wartburg Place
PO Box 5004
Dubuque, Iowa 52004-5004



HOW CAN I LEARN MORE ABOUT THE TEEM PROGRAM?

- Contact your synod bishop
- Visit the TEEM webpage on the ELCA website, under "Vocation & Education" (<http://www.elca.org/leadership/liderazgo/english/teem.html>)
- Read the ELCA Candidacy Manual, pages B-8 through B-11 (http://www.elca.org/candidacy/manual/pdf/CandidacyManual_HiRes.pdf)